


ELLINGTON
PROPERTIES

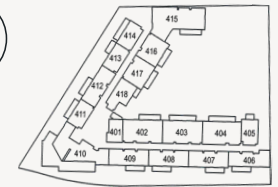
Harrington
HOUSE



Unit Floor Plans

Studio - Type A

Harrington HOUSE



4th
Floor



3rd
Floor



2nd
Floor



1st
Floor



G
Floor

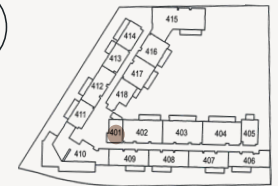
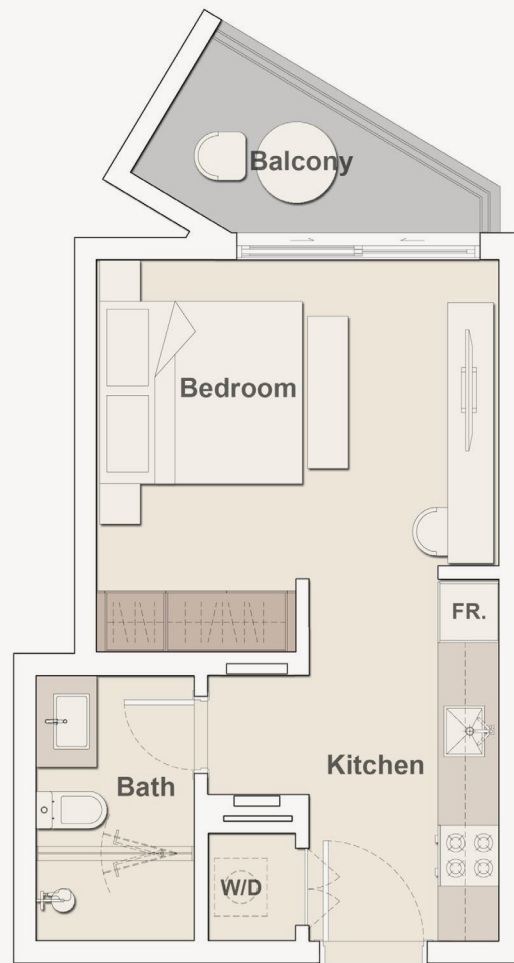
Internal Living Area	398.05 sq.ft.
Outdoor Living Area	43.92 sq.ft.
Total Living Area	441.97 sq.ft.



All drawings and dimensions are approximate. Drawings are not to scale and are subject to change without notice. The developer reserves the right to make revisions. The units are taken from the typical floor of the building and columns may vary in size depending on the floor level. The furnishings and accessories shown are for representation only. The length and width of the unit and balcony varies depending on which floor and which orientation the unit is located within the building to comply with the building authority regulations

Studio - Type B

Harrington HOUSE



4th
Floor



3rd
Floor



2nd
Floor



1st
Floor



G
Floor

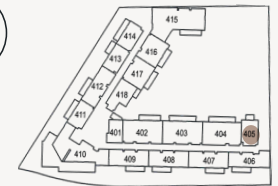
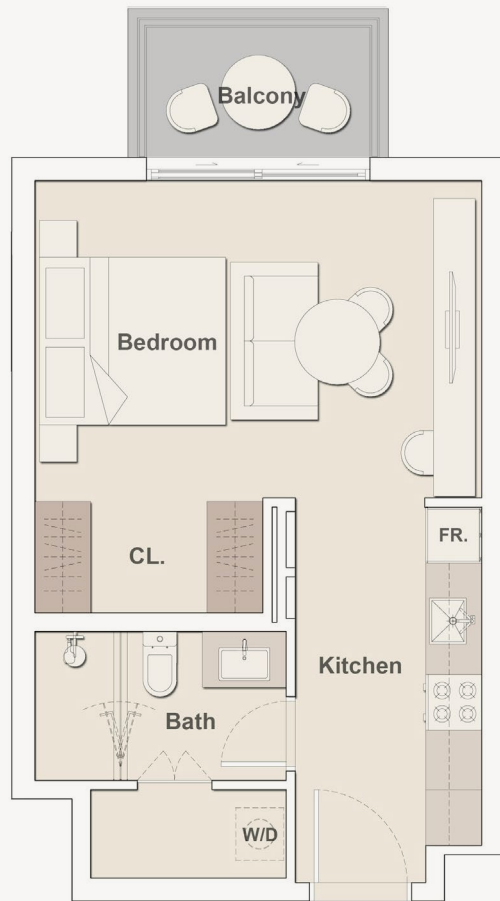
Internal Living Area	332.50 sq.ft.
Outdoor Living Area	49.30 sq.ft.
Total Living Area	381.80 sq.ft.



All drawings and dimensions are approximate. Drawings are not to scale and are subject to change without notice. The developer reserves the right to make revisions. The units are taken from the typical floor of the building and columns may vary in size depending on the floor level. The furnishings and accessories shown are for representation only. The length and width of the unit and balcony varies depending on which floor and which orientation the unit is located within the building to comply with the building authority regulations

Studio - Type D

Harrington HOUSE



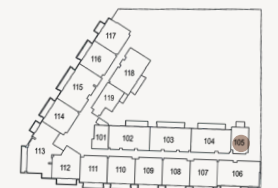
4th
Floor



3rd
Floor



2nd
Floor



1st
Floor



G
Floor

Internal Living Area	412.69 sq.ft.
Outdoor Living Area	43.49 sq.ft.
Total Living Area	456.17 sq.ft.



All drawings and dimensions are approximate. Drawings are not to scale and are subject to change without notice. The developer reserves the right to make revisions. The units are taken from the typical floor of the building and columns may vary in size depending on the floor level. The furnishings and accessories shown are for representation only. The length and width of the unit and balcony varies depending on which floor and which orientation the unit is located within the building to comply with the building authority regulations

1 Bedroom - Type A

Harrington HOUSE



Internal Living Area	673.60 sq.ft.
Outdoor Living Area	100.21 sq.ft.
Total Living Area	773.82 sq.ft.

All drawings and dimensions are approximate. Drawings are not to scale and are subject to change without notice. The developer reserves the right to make revisions. The units are taken from the typical floor of the building and columns may vary in size depending on the floor level. The furnishings and accessories shown are for representation only. The length and width of the unit and balcony varies depending on which floor and which orientation the unit is located within the building to comply with the building authority regulations



4th
Floor



3rd
Floor



2nd
Floor



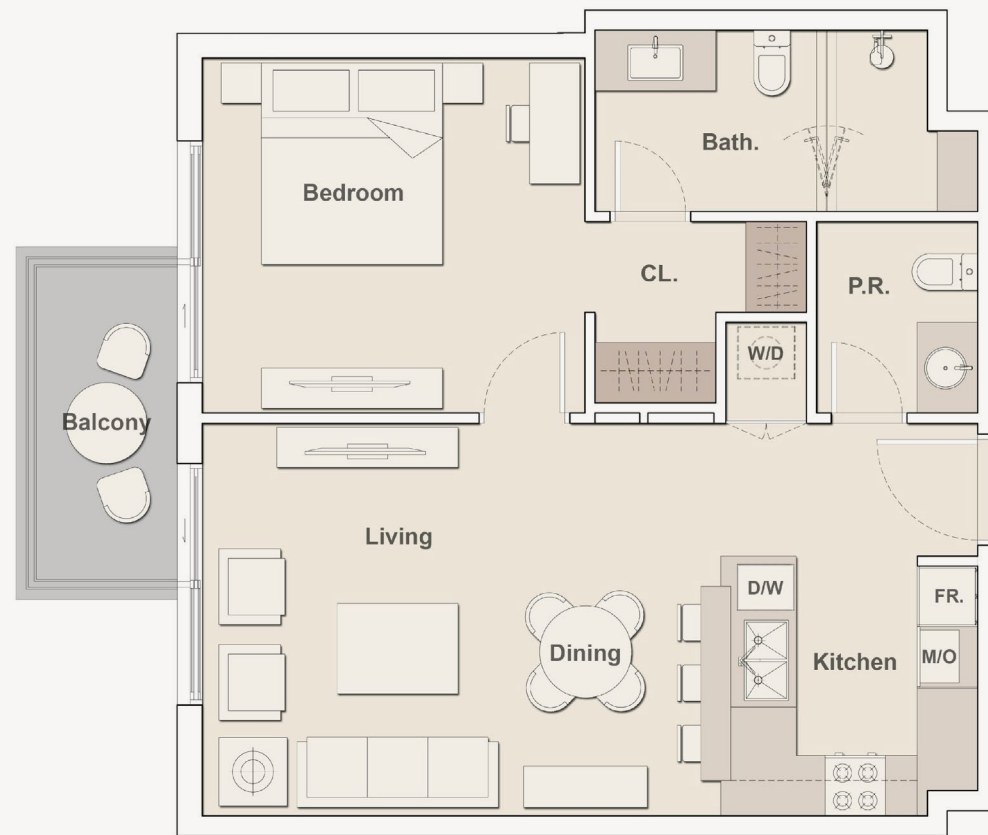
1st
Floor



G
Floor

1 Bedroom - Type A2

Harrington HOUSE



Internal Living Area	667.58 sq.ft.
Outdoor Living Area	55.86 sq.ft.
Total Living Area	723.44 sq.ft.



4th
Floor



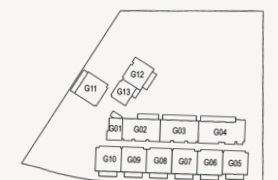
3rd
Floor



2nd
Floor



1st
Floor



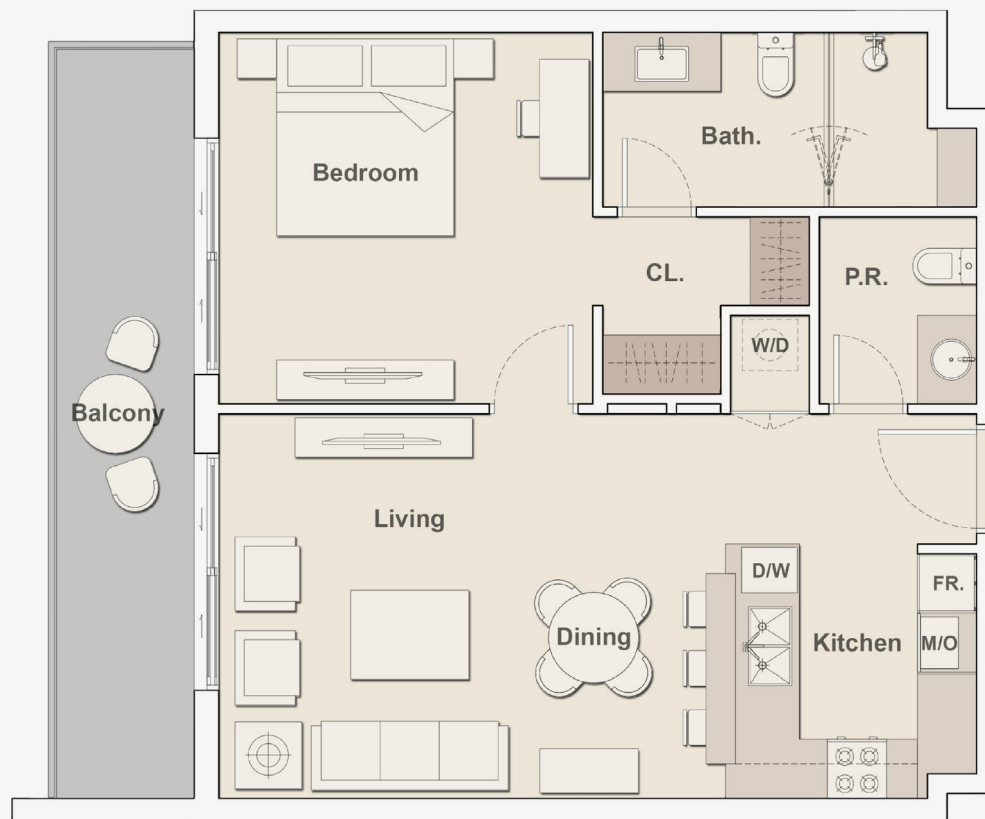
G
Floor



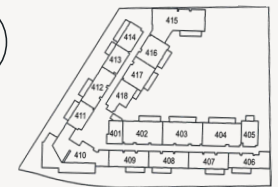
All drawings and dimensions are approximate. Drawings are not to scale and are subject to change without notice. The developer reserves the right to make revisions. The units are taken from the typical floor of the building and columns may vary in size depending on the floor level. The furnishings and accessories shown are for representation only. The length and width of the unit and balcony varies depending on which floor and which orientation the unit is located within the building to comply with the building authority regulations

1 Bedroom - Type A₃

Harrington HOUSE



Internal Living Area	672.96 sq.ft.
Outdoor Living Area	133.58 sq.ft.
Total Living Area	806.54 sq.ft.



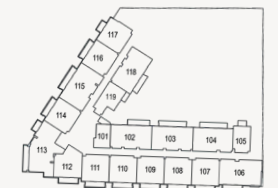
4th
Floor



3rd
Floor



2nd
Floor



1st
Floor



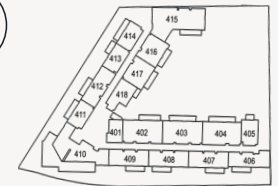
G
Floor



All drawings and dimensions are approximate. Drawings are not to scale and are subject to change without notice. The developer reserves the right to make revisions. The units are taken from the typical floor of the building and columns may vary in size depending on the floor level. The furnishings and accessories shown are for representation only. The length and width of the unit and balcony varies depending on which floor and which orientation the unit is located within the building to comply with the building authority regulations

1 Bedroom - Type B

Harrington HOUSE



4th
Floor



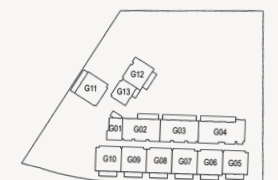
3rd
Floor



2nd
Floor



1st
Floor



G
Floor

Internal Living Area	692.33 sq.ft.
Outdoor Living Area	98.81 sq.ft.
Total Living Area	791.15 sq.ft.



All drawings and dimensions are approximate. Drawings are not to scale and are subject to change without notice. The developer reserves the right to make revisions. The units are taken from the typical floor of the building and columns may vary in size depending on the floor level. The furnishings and accessories shown are for representation only. The length and width of the unit and balcony varies depending on which floor and which orientation the unit is located within the building to comply with the building authority regulations

1 Bedroom - Type C

Harrington HOUSE



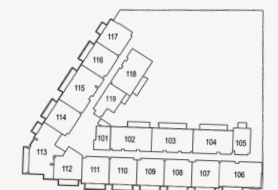
4th
Floor



3rd
Floor



2nd
Floor



1st
Floor



G
Floor

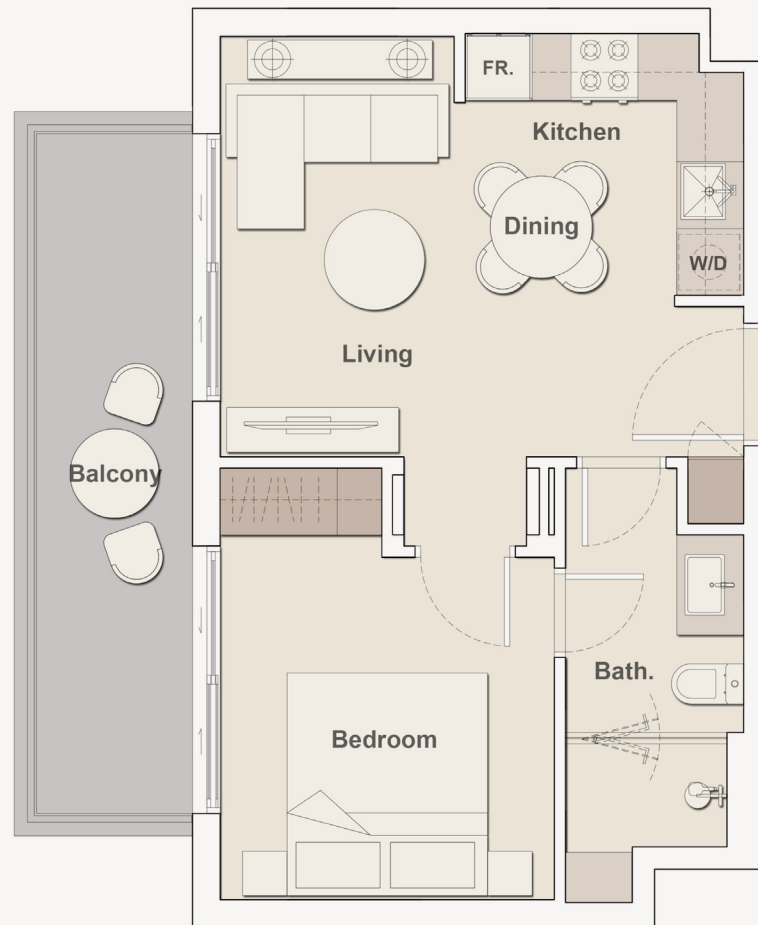
Internal Living Area	415.06 sq.ft.
Outdoor Living Area	68.46 sq.ft.
Total Living Area	483.51 sq.ft.



All drawings and dimensions are approximate. Drawings are not to scale and are subject to change without notice. The developer reserves the right to make revisions. The units are taken from the typical floor of the building and columns may vary in size depending on the floor level. The furnishings and accessories shown are for representation only. The length and width of the unit and balcony varies depending on which floor and which orientation the unit is located within the building to comply with the building authority regulations

1 Bedroom - Type C1

Harrington HOUSE



Internal Living Area	414.63 sq.ft.
Outdoor Living Area	107.32 sq.ft.
Total Living Area	521.94 sq.ft.



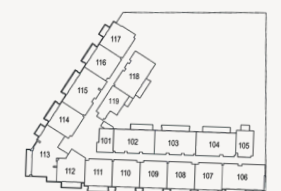
4th
Floor



3rd
Floor



2nd
Floor



1st
Floor



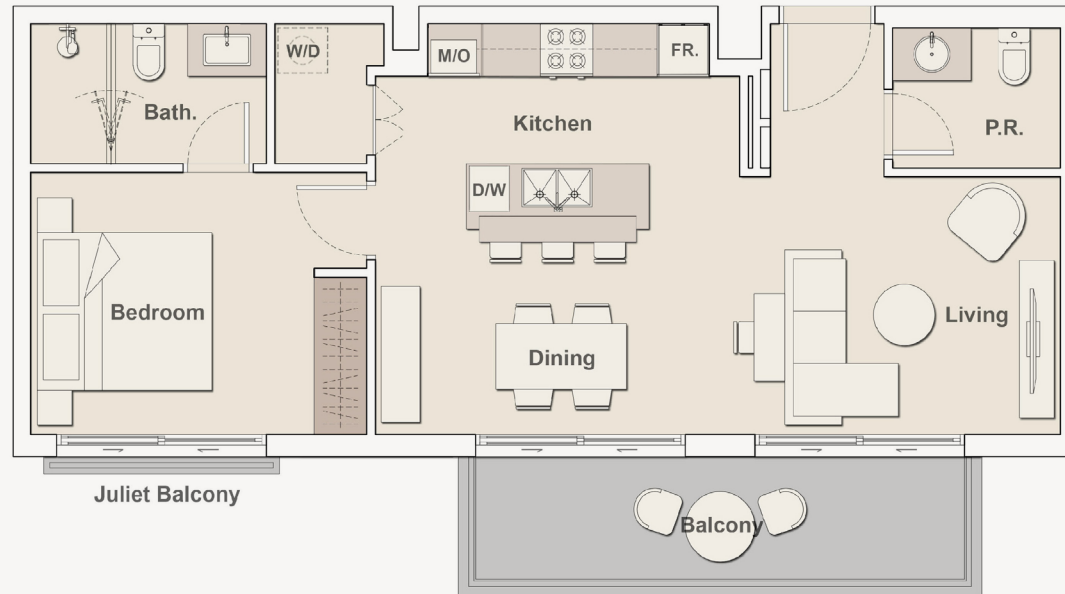
G
Floor



All drawings and dimensions are approximate. Drawings are not to scale and are subject to change without notice. The developer reserves the right to make revisions. The units are taken from the typical floor of the building and columns may vary in size depending on the floor level. The furnishings and accessories shown are for representation only. The length and width of the unit and balcony varies depending on which floor and which orientation the unit is located within the building to comply with the building authority regulations

1 Bedroom - Type D

Harrington HOUSE



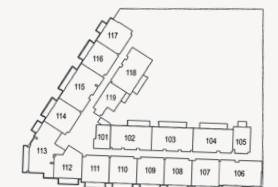
4th
Floor



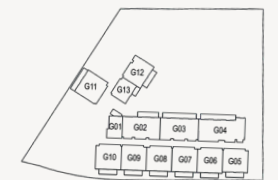
3rd
Floor



2nd
Floor



1st
Floor



G
Floor

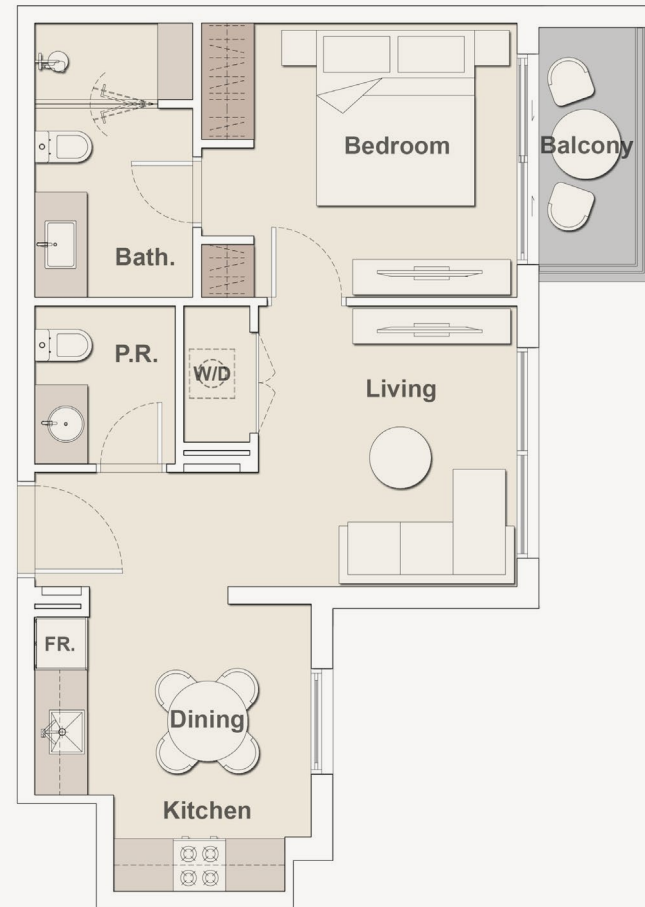
Internal Living Area	625.71 sq.ft.
Outdoor Living Area	98.81 sq.ft.
Total Living Area	724.52 sq.ft.



All drawings and dimensions are approximate. Drawings are not to scale and are subject to change without notice. The developer reserves the right to make revisions. The units are taken from the typical floor of the building and columns may vary in size depending on the floor level. The furnishings and accessories shown are for representation only. The length and width of the unit and balcony varies depending on which floor and which orientation the unit is located within the building to comply with the building authority regulations

1 Bedroom - Type E

Harrington HOUSE



4th
Floor



3rd
Floor



2nd
Floor



1st
Floor



G
Floor

Internal Living Area	518.07 sq.ft.
Outdoor Living Area	40.58 sq.ft.
Total Living Area	558.65 sq.ft.



All drawings and dimensions are approximate. Drawings are not to scale and are subject to change without notice. The developer reserves the right to make revisions. The units are taken from the typical floor of the building and columns may vary in size depending on the floor level. The furnishings and accessories shown are for representation only. The length and width of the unit and balcony varies depending on which floor and which orientation the unit is located within the building to comply with the building authority regulations

1 Bedroom - Type F

Harrington HOUSE



Internal Living Area	596.10 sq.ft.
Outdoor Living Area	100.21 sq.ft.
Total Living Area	696.32 sq.ft.



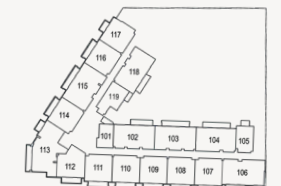
4th
Floor



3rd
Floor



2nd
Floor



1st
Floor



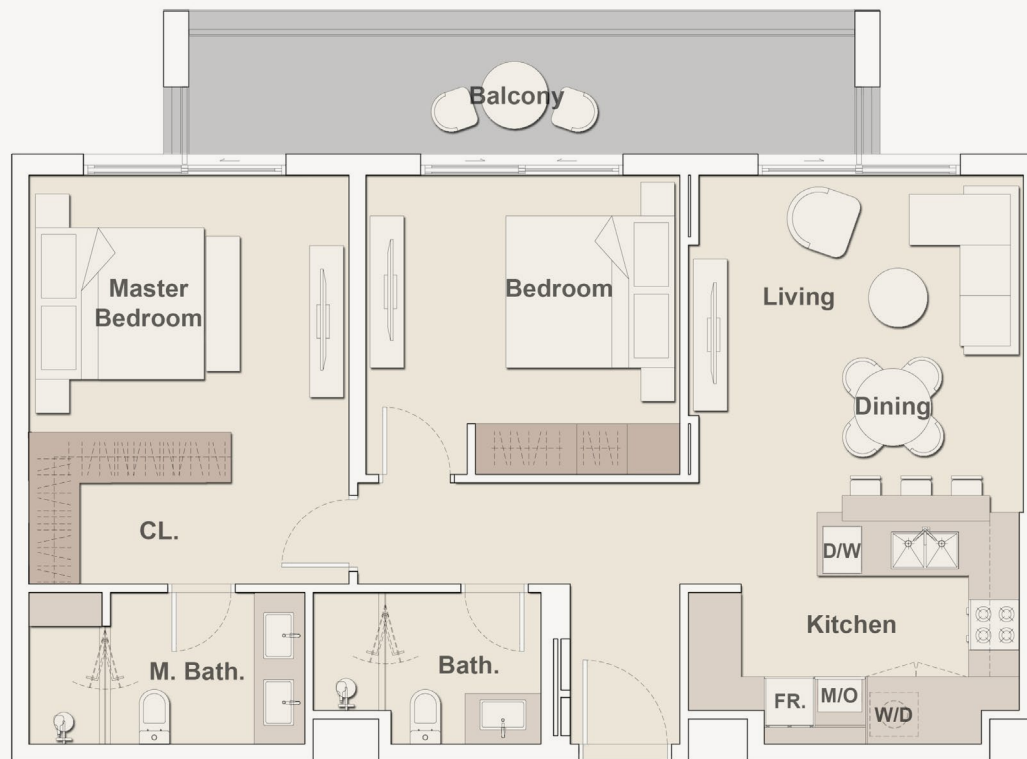
G
Floor



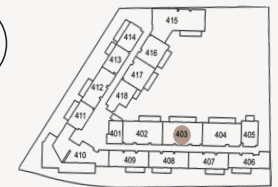
All drawings and dimensions are approximate. Drawings are not to scale and are subject to change without notice. The developer reserves the right to make revisions. The units are taken from the typical floor of the building and columns may vary in size depending on the floor level. The furnishings and accessories shown are for representation only. The length and width of the unit and balcony varies depending on which floor and which orientation the unit is located within the building to comply with the building authority regulations

2 Bedroom - Type A

Harrington HOUSE



Internal Living Area	886.30 sq.ft.
Outdoor Living Area	139.72 sq.ft.
Total Living Area	1026.01 sq.ft.



4th
Floor



3rd
Floor



2nd
Floor



1st
Floor



G
Floor



All drawings and dimensions are approximate. Drawings are not to scale and are subject to change without notice. The developer reserves the right to make revisions. The units are taken from the typical floor of the building and columns may vary in size depending on the floor level. The furnishings and accessories shown are for representation only. The length and width of the unit and balcony varies depending on which floor and which orientation the unit is located within the building to comply with the building authority regulations

2 Bedroom - Type A1

Harrington HOUSE



Internal Living Area	885.87 sq.ft.
Outdoor Living Area	112.27 sq.ft.
Total Living Area	998.14 sq.ft.



4th
Floor



3rd
Floor



2nd
Floor



1st
Floor



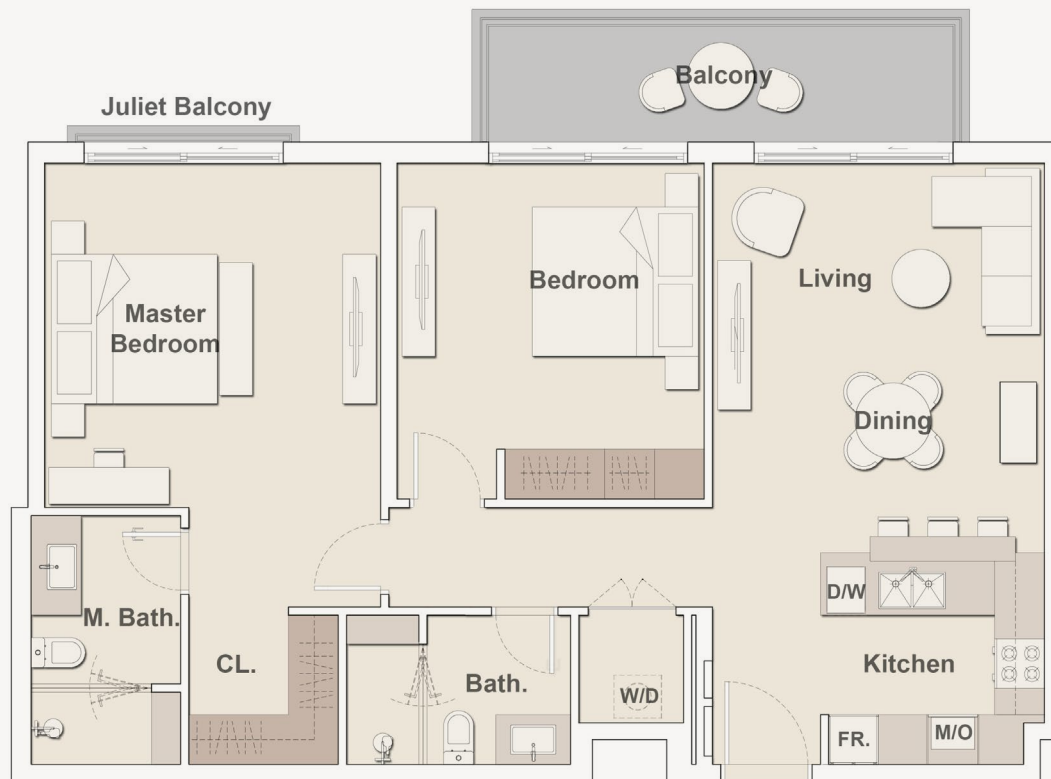
G
Floor



All drawings and dimensions are approximate. Drawings are not to scale and are subject to change without notice. The developer reserves the right to make revisions. The units are taken from the typical floor of the building and columns may vary in size depending on the floor level. The furnishings and accessories shown are for representation only. The length and width of the unit and balcony varies depending on which floor and which orientation the unit is located within the building to comply with the building authority regulations

2 Bedroom - Type B

Harrington HOUSE



Internal Living Area	981.78 sq.ft.
Outdoor Living Area	98.81 sq.ft.
Total Living Area	1080.59 sq.ft.

All drawings and dimensions are approximate. Drawings are not to scale and are subject to change without notice. The developer reserves the right to make revisions. The units are taken from the typical floor of the building and columns may vary in size depending on the floor level. The furnishings and accessories shown are for representation only. The length and width of the unit and balcony varies depending on which floor and which orientation the unit is located within the building to comply with the building authority regulations



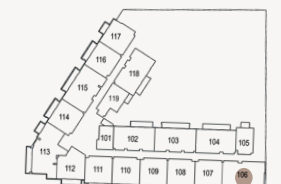
4th
Floor



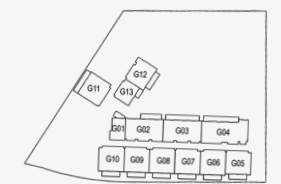
3rd
Floor



2nd
Floor



1st
Floor



G
Floor



2 Bedroom - Type C

Harrington HOUSE



4th
Floor



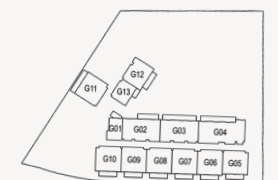
3rd
Floor



2nd
Floor



1st
Floor



G
Floor

Internal Living Area	866.06 sq.ft.
Outdoor Living Area	138.32 sq.ft.
Total Living Area	1004.38 sq.ft.



All drawings and dimensions are approximate. Drawings are not to scale and are subject to change without notice. The developer reserves the right to make revisions. The units are taken from the typical floor of the building and columns may vary in size depending on the floor level. The furnishings and accessories shown are for representation only. The length and width of the unit and balcony varies depending on which floor and which orientation the unit is located within the building to comply with the building authority regulations

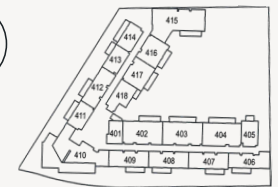
2 Bedroom - Type D

Harrington HOUSE



Internal Living Area	1003.52 sq.ft.
Outdoor Living Area	127.01 sq.ft.
Total Living Area	1130.53 sq.ft.

All drawings and dimensions are approximate. Drawings are not to scale and are subject to change without notice. The developer reserves the right to make revisions. The units are taken from the typical floor of the building and columns may vary in size depending on the floor level. The furnishings and accessories shown are for representation only. The length and width of the unit and balcony varies depending on which floor and which orientation the unit is located within the building to comply with the building authority regulations



4th
Floor



3rd
Floor



2nd
Floor



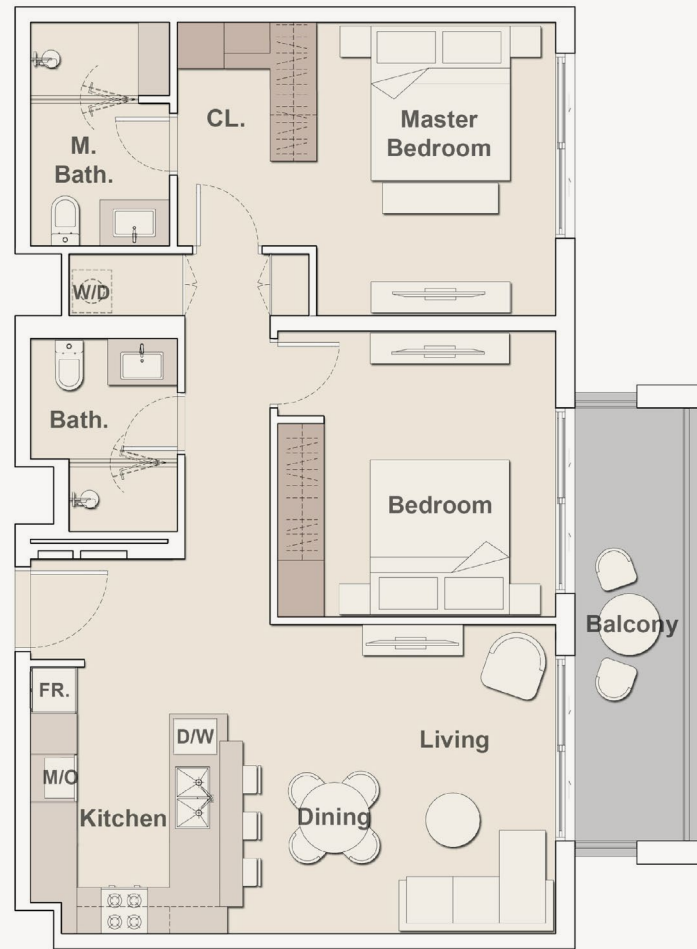
1st
Floor



G
Floor

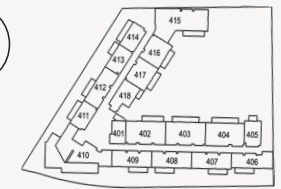
2 Bedroom - Type E

Harrington HOUSE



Internal Living Area	893.08 sq.ft.
Outdoor Living Area	100.21 sq.ft.
Total Living Area	993.29 sq.ft.

All drawings and dimensions are approximate. Drawings are not to scale and are subject to change without notice. The developer reserves the right to make revisions. The units are taken from the typical floor of the building and columns may vary in size depending on the floor level. The furnishings and accessories shown are for representation only. The length and width of the unit and balcony varies depending on which floor and which orientation the unit is located within the building to comply with the building authority regulations



4th
Floor



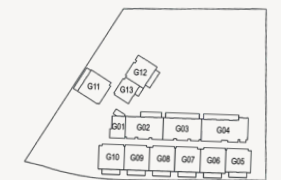
3rd
Floor



2nd
Floor



1st
Floor



G
Floor

2 Bedroom - Type F

Harrington HOUSE



Internal Living Area	1158.41 sq.ft.
Outdoor Living Area	186.86 sq.ft.
Total Living Area	1354.27 sq.ft.

All drawings and dimensions are approximate. Drawings are not to scale and are subject to change without notice. The developer reserves the right to make revisions. The units are taken from the typical floor of the building and columns may vary in size depending on the floor level. The furnishings and accessories shown are for representation only. The length and width of the unit and balcony varies depending on which floor and which orientation the unit is located within the building to comply with the building authority regulations



4th
Floor



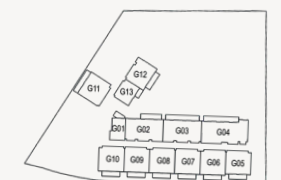
3rd
Floor



2nd
Floor



1st
Floor



G
Floor



2 Bedroom - Type G

Harrington HOUSE



Internal Living Area	1132.04 sq.ft.
Outdoor Living Area	808.80 sq.ft.
Total Living Area	1940.84 sq.ft.



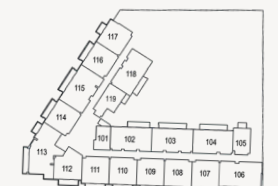
4th
Floor



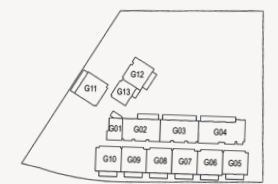
3rd
Floor



2nd
Floor



1st
Floor



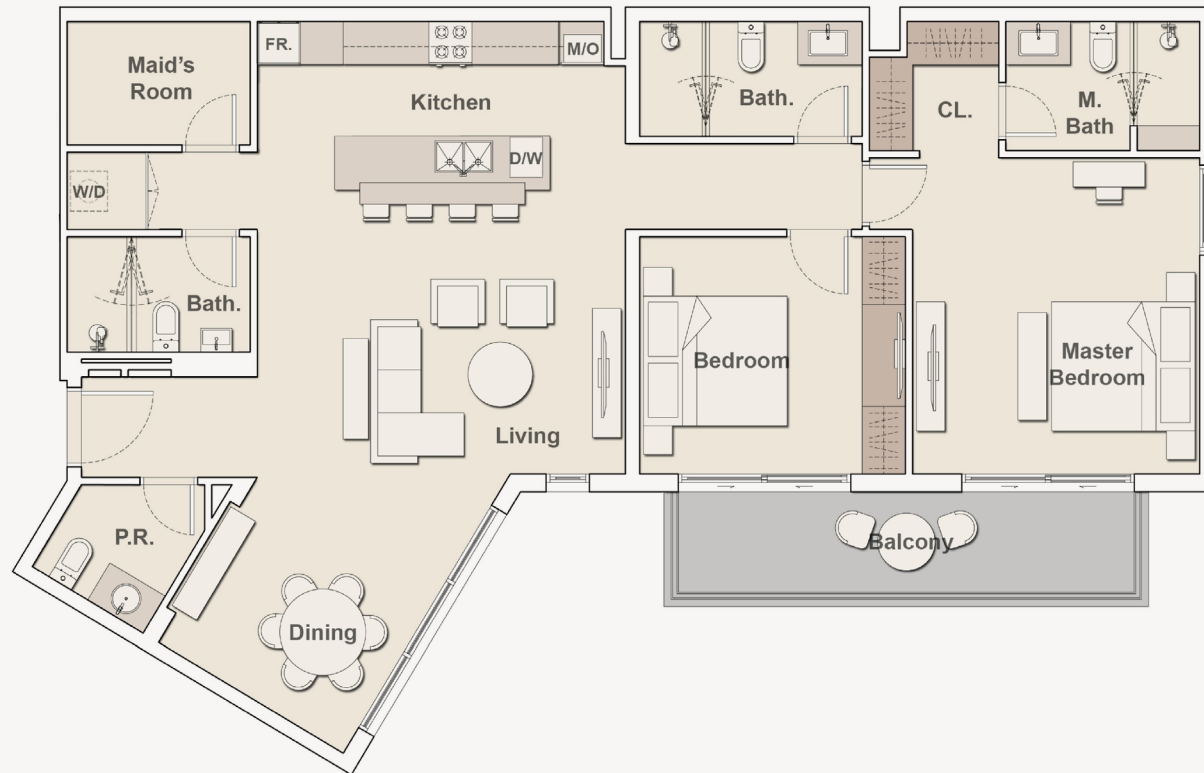
G
Floor



All drawings and dimensions are approximate. Drawings are not to scale and are subject to change without notice. The developer reserves the right to make revisions. The units are taken from the typical floor of the building and columns may vary in size depending on the floor level. The furnishings and accessories shown are for representation only. The length and width of the unit and balcony varies depending on which floor and which orientation the unit is located within the building to comply with the building authority regulations

2 Bedroom - Type H

Harrington HOUSE



Internal Living Area	1285.75 sq.ft.
Outdoor Living Area	111.51 sq.ft.
Total Living Area	1397.26 sq.ft.



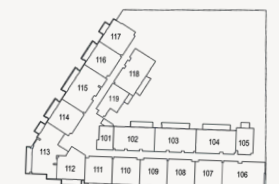
4th
Floor



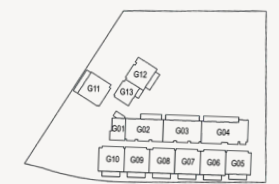
3rd
Floor



2nd
Floor



1st
Floor



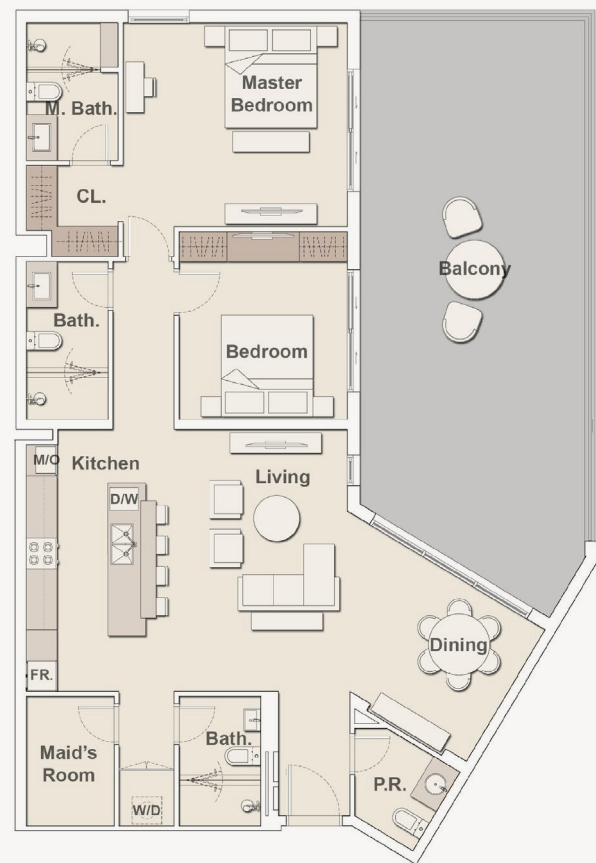
G
Floor



All drawings and dimensions are approximate. Drawings are not to scale and are subject to change without notice. The developer reserves the right to make revisions. The units are taken from the typical floor of the building and columns may vary in size depending on the floor level. The furnishings and accessories shown are for representation only. The length and width of the unit and balcony varies depending on which floor and which orientation the unit is located within the building to comply with the building authority regulations

2 Bedroom - Type H1

Harrington HOUSE



Internal Living Area	1282.73 sq.ft.
Outdoor Living Area	551.33 sq.ft.
Total Living Area	1834.06 sq.ft.

All drawings and dimensions are approximate. Drawings are not to scale and are subject to change without notice. The developer reserves the right to make revisions. The units are taken from the typical floor of the building and columns may vary in size depending on the floor level. The furnishings and accessories shown are for representation only. The length and width of the unit and balcony varies depending on which floor and which orientation the unit is located within the building to comply with the building authority regulations



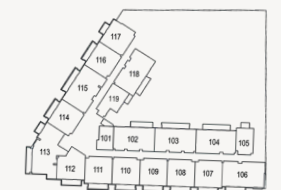
4th
Floor



3rd
Floor



2nd
Floor



1st
Floor

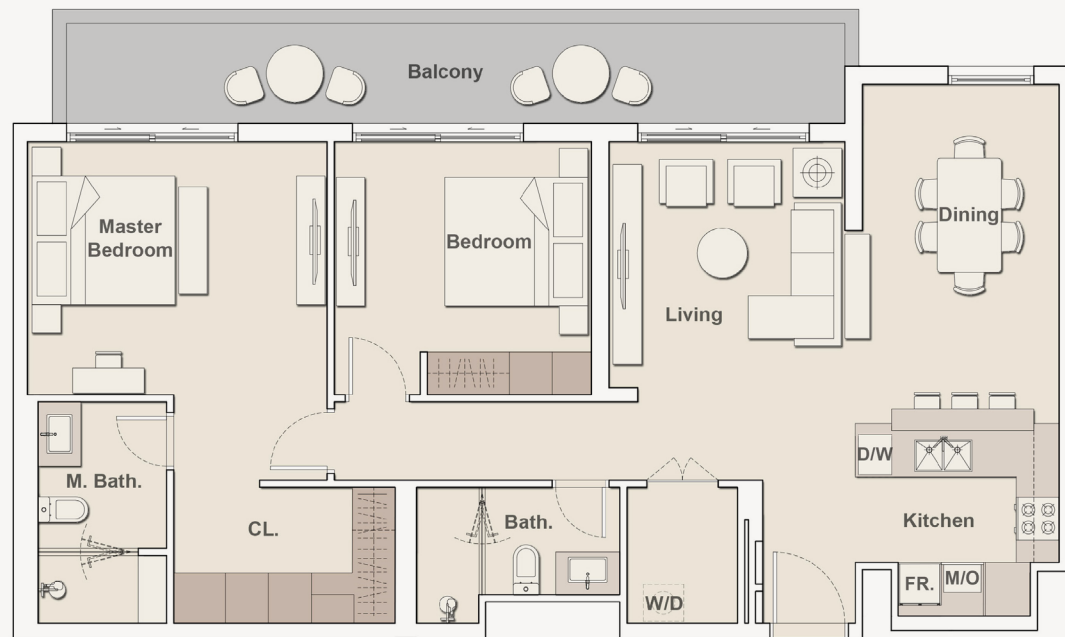


G
Floor

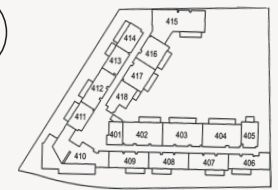


2 Bedroom - Type I

Harrington HOUSE



Internal Living Area	1098.13 sq.ft.
Outdoor Living Area	201.18 sq.ft.
Total Living Area	1299.31 sq.ft.



4th
Floor



3rd
Floor



2nd
Floor



1st
Floor



G
Floor



All drawings and dimensions are approximate. Drawings are not to scale and are subject to change without notice. The developer reserves the right to make revisions. The units are taken from the typical floor of the building and columns may vary in size depending on the floor level. The furnishings and accessories shown are for representation only. The length and width of the unit and balcony varies depending on which floor and which orientation the unit is located within the building to comply with the building authority regulations



ELLINGTON

PROPERTIES

LIVE IN *DESIGN*

ELLINGTONPROPERTIES.AE